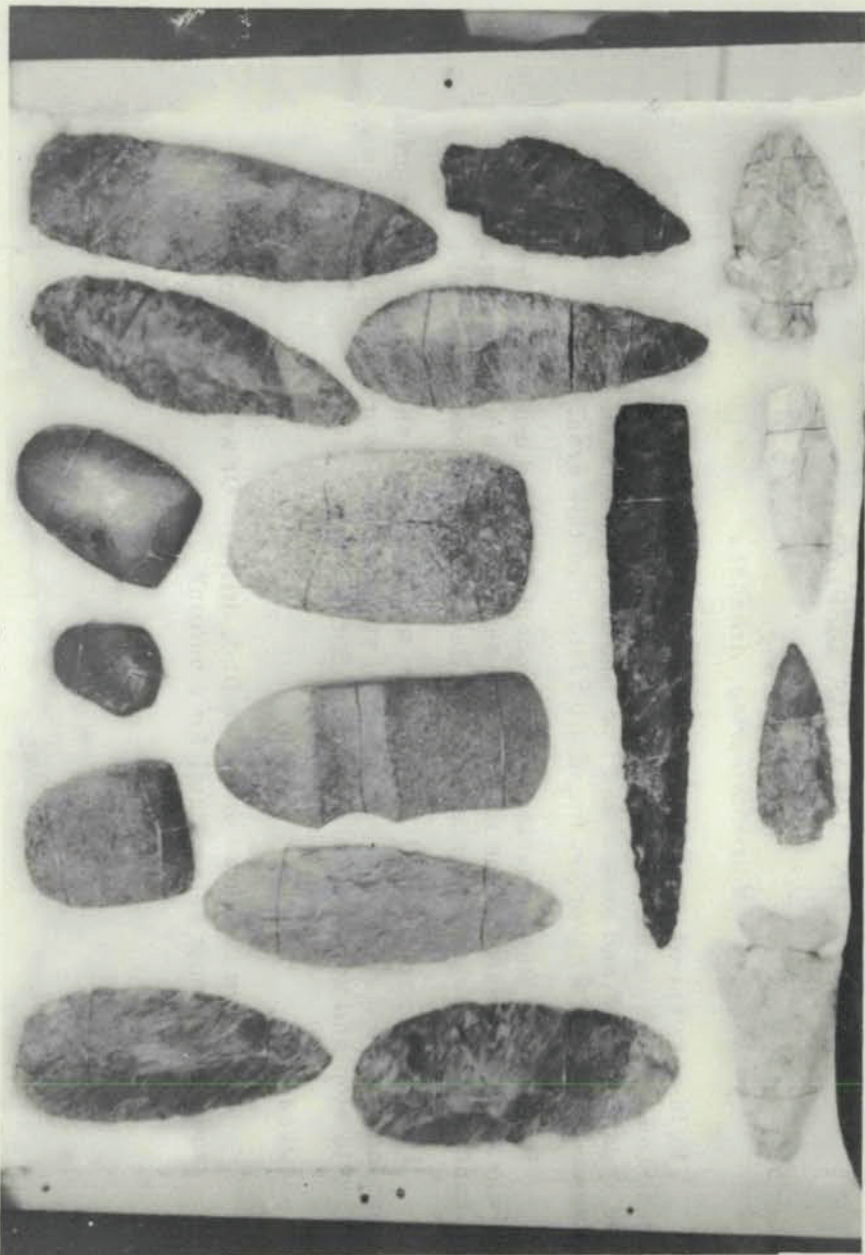
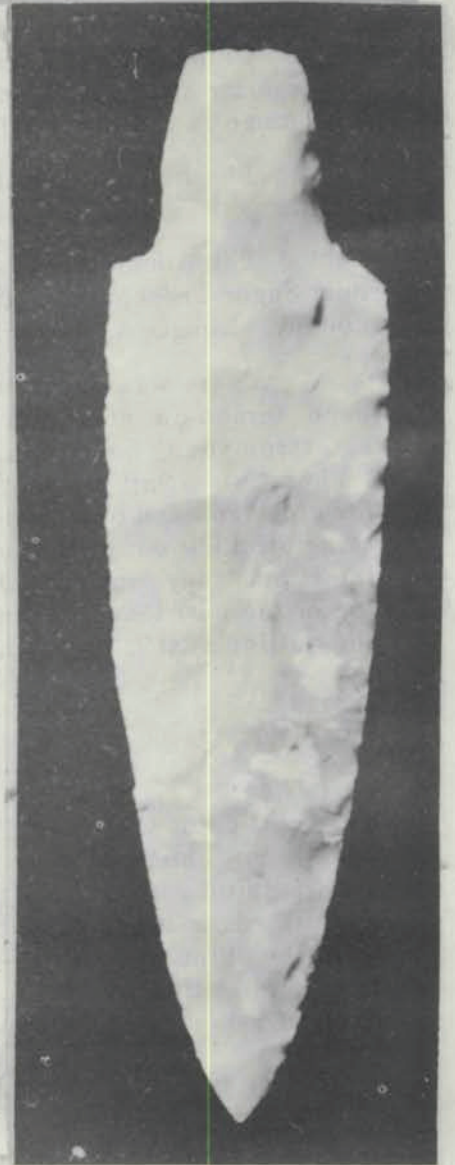
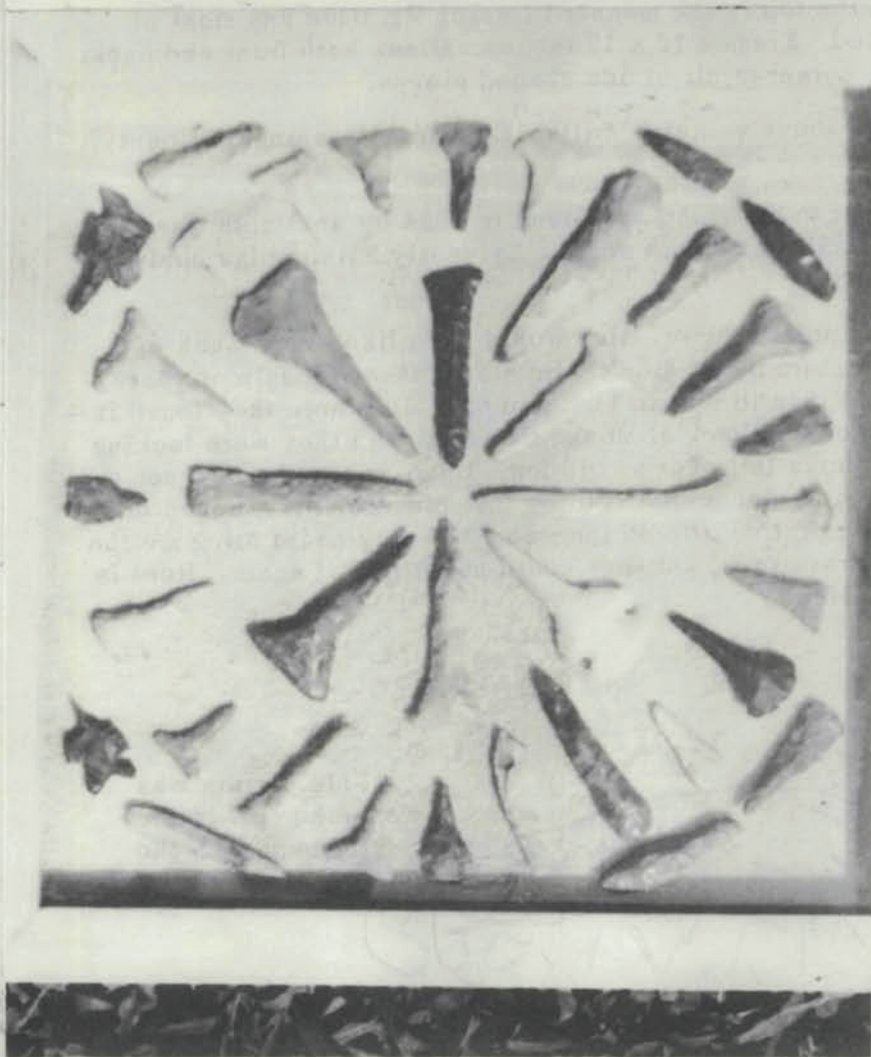
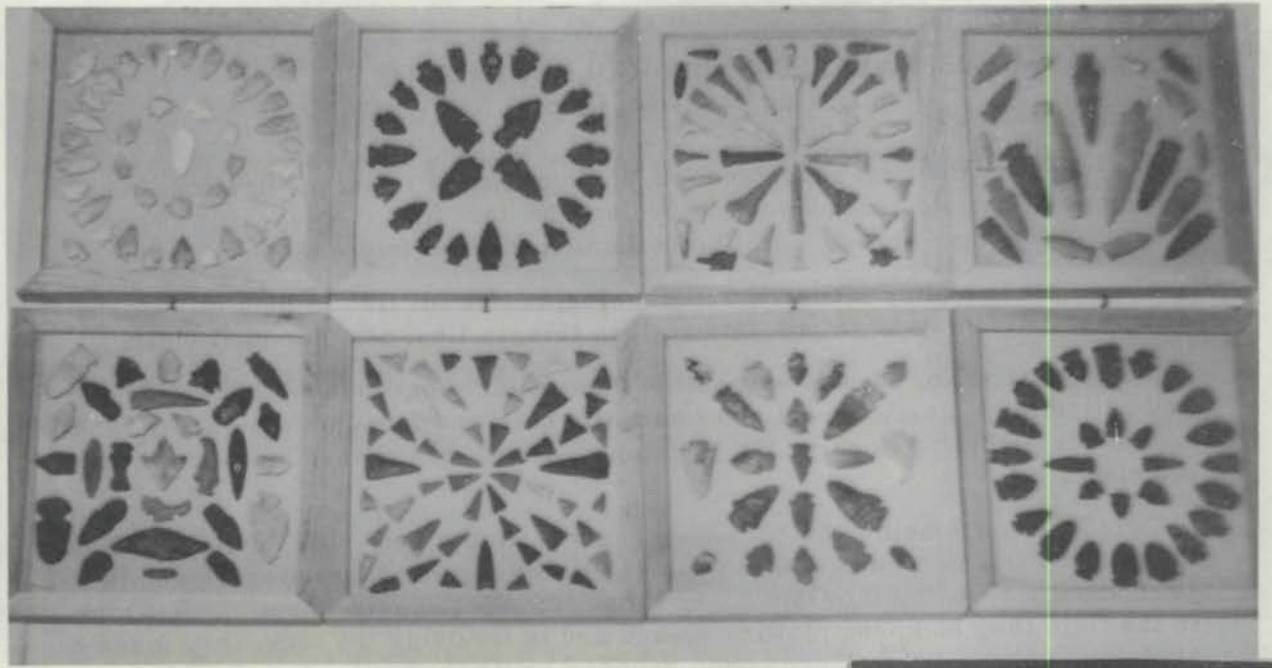


-66-



Don I. Blue Collection  
Marietta, Ohio



Don I. Blue Collection  
Marietta, Ohio

A DISPLAY FROM THE COLLECTION OF  
Don I. Blue, Marietta, Ohio

This is the first appearance of Mr. Don I. Blue in our publication, but he is one of our older members and judging from this first display, it is hoped we may have some more of this fine collection in some future issues.

This is mainly a descriptive showing and we all like to look at "stones" and what better way to get acquainted than this, in lieu, of a personal visit.

On page No. 66, you will notice a beautiful spear that would do credit to any collection, in size, shape and material. This was found on a high hill back of Lowell, Ohio, overlooking the Muskingum river. White shading to pink with red spots.

The frame below the above spear is also a very nice display. Notice the grooved trophy type axe in the center. Material in this frame was found in 1911 about 5 miles up the Ohio River above Marietta. There was a big flat rock in the field they had been plowing around and in removing the rock, they found a skeleton (which went to pieces upon exposure) with these pieces around it.

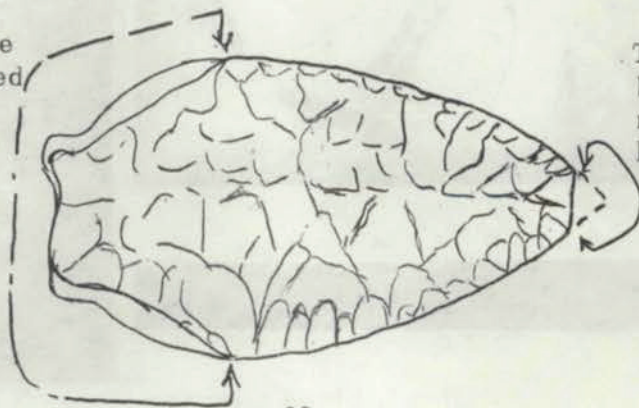
On page No. 67, at the top is the manner in which Mr. Blue has most of his smaller artifacts mounted. Frames 12 x 12 inches. Glass both front and back. The frame in the lower left corner is all of odd shaped pieces.

The frame below the above contains drills. Most from Washington County, Ohio.

The Adena type spear to the right was found in 1954 by an Amish farmer near Sugar Creek, Ohio. Bluish white with spots. Evidently Flint Ridge chalcidony. Length 6 1/4 inches.

There was one small point that Mr. Blue would have liked very much to have turned out good in a picture but it didn't. He states that a couple of years ago three young boys brought it in to sell to him, and told him where they found it - "There is a small run that goes up back of Mound Cemetery and they were looking for crawdads and one of the boys fell over an old log. Upon arising he saw something sticking out of the log and discovered it to be this piece of flint, but in digging it out, they broke off the point. I offered them \$5.00 if they could bring me the log or the part that had the arrow in it, but they could never find it again. Here is the outline if it". says Mr. Blue.

This portion of the edge is not chipped but fractured and on both edges toward the point from here is fine chipping.



This portion was broken off in the removal from the log.