

An Added Note to the Eschbaugh Cache Find

By Don I. Blue
613 7th St.
Marietta, Ohio 45750

I was interested to read of the Eschbaugh discovery described in the Ohio Archaeologist. The enclosed photograph shows artifacts found by Ralph Buell during the 1920's on his farm which is about ¼ mile from the site of the Eschbaugh find. There had been a large flat rock in a field which had been

plowed for many years but which was too large to be removed by horses. When Mr. Buell got a tractor he decided it was time to remove the rock and beneath it he discovered a burial. The bones disintegrated during the operation but he brought me the pieces shown in the illustration.

The black flint piece is 6¼ inches long—it and the trophy type axe in the second row are the outstanding pieces. These were in my collection for fifty years but are now in the possession of my grandson, Christy Blue Holzapfel of Marietta, Ohio.

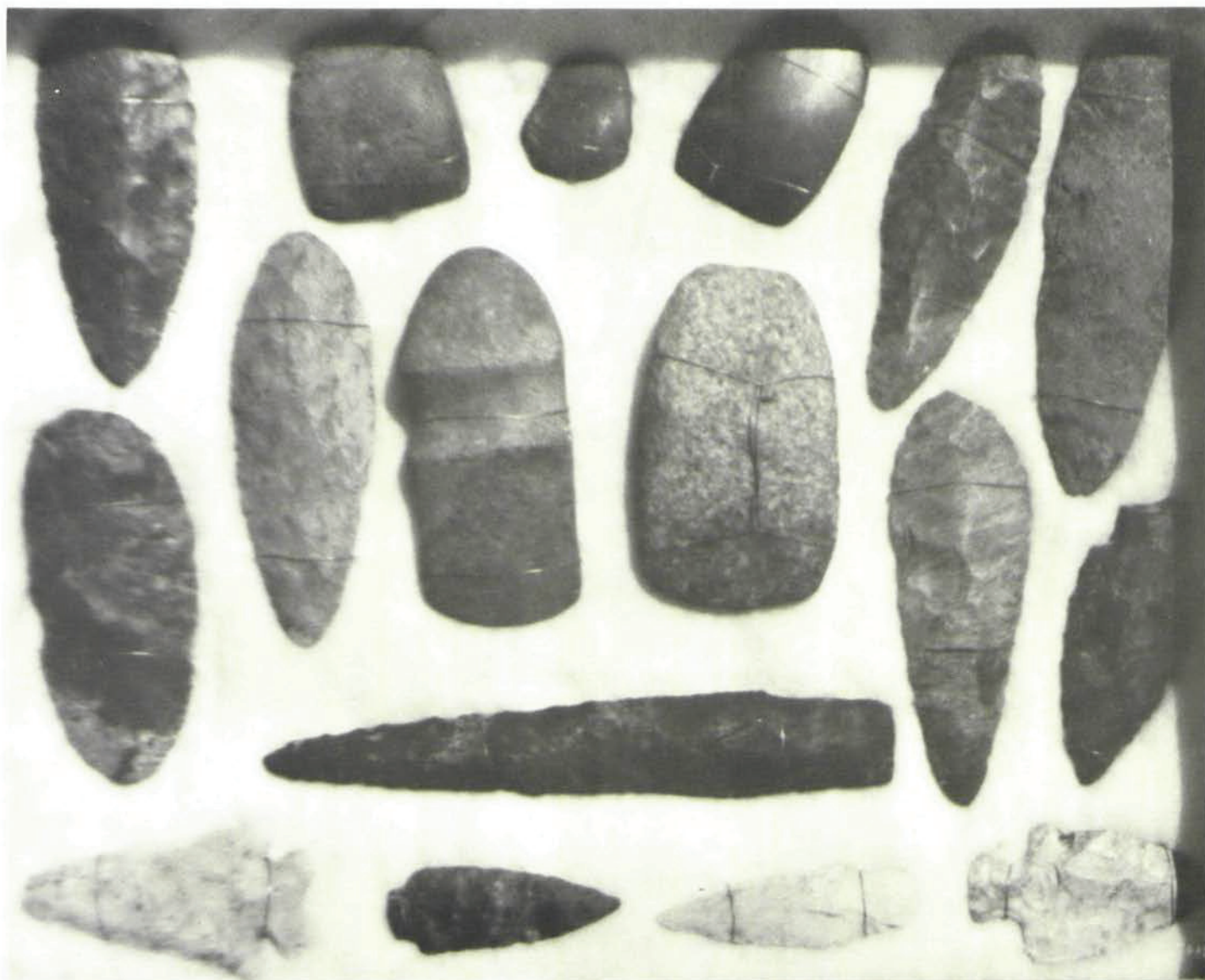


Fig. 1 (Blue) Artifacts found on the Buell farm in the 1920's.